

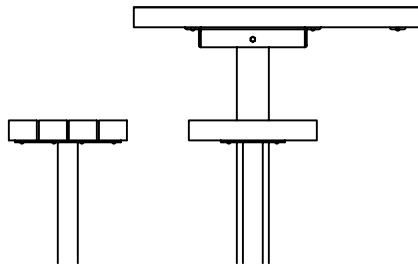
**TOP VIEW**

SCALE: 1/2" = 1'-0"

2'-8"  
(813 mm)

1'-6"  
(457 mm)

0'-0"  
FINISHED GRA



**FRONT VIEW**

SCALE: 1/2" = 1'-0"



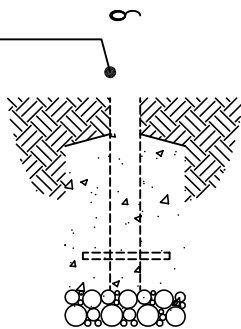
**DIRECT EMBEDMENT TABLE/  
SEAT FRAME ASSEMBLY**

0'-0"  
FINISHED GRADE

-(1'-4")  
-(406 mm)

**2059-ADA-E (DIRECT EMBEDMENT)**

SCALE: 3/4" = 1'-0"



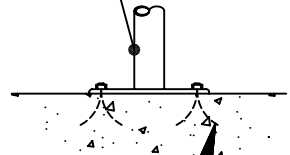
**PEDESTAL MOUNT TABLE/  
SEAT FRAME ASSEMBLY**

0'-0"  
FINISHED GRADE

5/8" (16 mm) DIAMETER HOLES  
PROVIDED FOR ANCHORS BY OTHERS.

**2059-ADA-P (PEDESTAL MOUNT)**

SCALE: 3/4" = 1'-0"



This drawing reveals the copyrighted intellectual property of Columbia Cascade Company. Not for use by others without our express, written authorization.

Authorization for use is hereby granted to architects, landscape architects and similar design professionals solely for the purpose of specifying TimberForm products.



**COLUMBIA CASCADE COMPANY**

Makers of TimberForm®, PipeLine®, RePlay®, TimberForm®-2, InterPlay®, CycLoops® and CycLocker® Products.

1300 S.W. Sixth Avenue, Suite 310 Telephone 503/223-1157  
Portland, Oregon 97201-3464 Facsimile 503/223-4530  
U.S.A.

WWW.TIMBERFORM.COM

Title:  
**TIMBERFORM PARKWAY TABLES  
MODEL NO. 2059-ADA  
ACCESSIBLE TABLE WITH THREE SEATS  
(RECYCLED PLASTIC SLATS)**



Scale NOTED  
Drawn by: AT 07-04-10  
Ck'd by:

Drawing No.  
W-2059-ADA

Sheet  
1 of 1