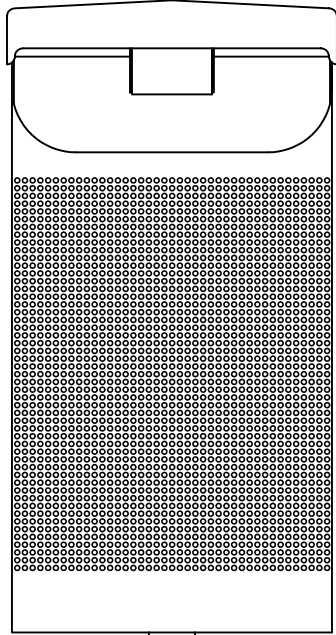


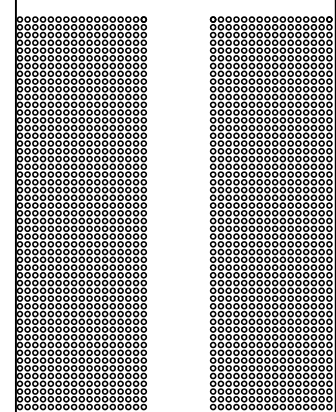
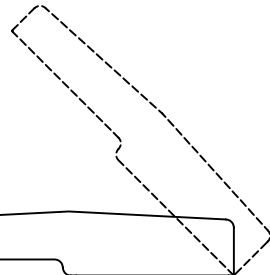
TOP VIEW
SCALE: 1"=1'-0"

3'-7"
(1092 mm)



0'-0"

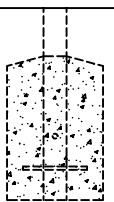
FRONT VIEW
SCALE: 1"=1'-0"



SIDE VIEW
SCALE: 1"=1'-0"

INCLUDES 23-GALLON RECYCLED PLASTIC LINER.

0'-0"

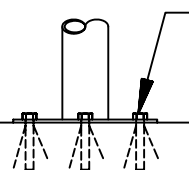


-(2'-0")
-(610 mm)

2654-E (DIRECT EMBEDMENT)
SCALE: 1/2"=1'-0"

NOTE:
CONCRETE FOOTING AND NO. 4 REBAR (BY OTHERS) PER LOCAL SOIL CONDITIONS. CONSULT PROJECT ENGINEER FOR EXACT REQUIREMENTS.

0'-0"



5/8" (16 mm) DIA. HOLE PROVIDED FOR ANCHORS BY OTHERS. (TYPICAL-4)

2654-P (PEDESTAL MOUNT)
SCALE: 1"=1'-0"

This drawing reveals the copyrighted intellectual property of Columbia Cascade Company. Not for use by others without our express, written authorization.

Authorization for use is hereby granted to architects, landscape architects and similar design professionals solely for the purpose of specifying TimberForm products.



COLUMBIA CASCADE COMPANY

Makers of TimberForm®, PipeLine®, RePlay®, TimberForm®-2, InterPlay®, CycLoops® and CycLocker® Products.

1300 S.W. Sixth Avenue, Suite 310 Telephone 503/223-1157
Portland, Oregon 97201-3464 Facsimile 503/223-4530
U.S.A.

WWW.TIMBERFORM.COM

Title:

TIMBERFORM PALOMAR
MODEL NO. 2654
HINGED-LID LITTER CONTAINER



Scale NOTED
Drawn by: AT 07-04-10
Ck'd by:

Drawing No.
W-2654

Sheet
1 of 1