

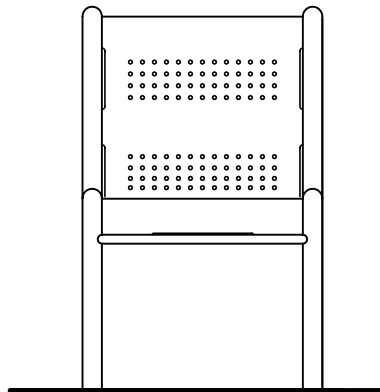
TOP VIEW

2'-8"
(813 mm)

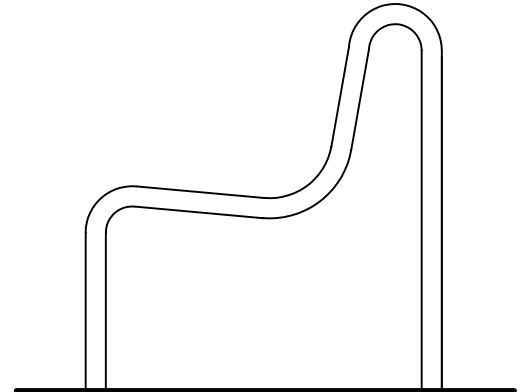
1'-4"
(406 mm)

0'-0"

FINISHED GRADE



FRONT VIEW



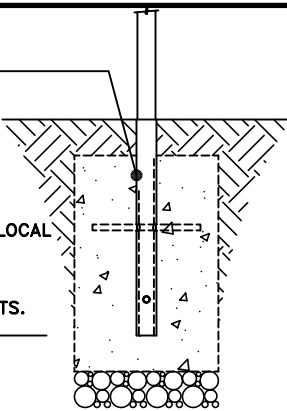
END VIEW

DIRECT EMBEDMENT
POST
(TYPICAL-4)

0'-0"
FINISHED GRADE

NOTE:
CONCRETE FOOTING
AND NO. 4 REBAR
(BY OTHERS) PER LOCAL
SOIL CONDITIONS,
CONSULT PROJECT
ENGINEER FOR
EXACT REQUIREMENTS.

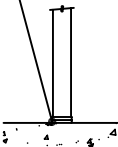
-(1'-6")
-(457 mm)



2931-20-E (DIRECT EMBEDMENT)

LEVELING
FOOT
(TYPICAL-4)

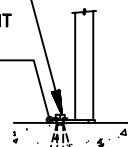
0'-0"
FINISHED GRADE



2931-20-L (LEVELING MOUNT)

5/8" (16 mm) DIAMETER HOLES
PROVIDED FOR ANCHORS
BY OTHERS
(TYPICAL-4)

PEDESTAL MOUNT
BASE
(TYPICAL-4)



2931-20-P (PEDESTAL MOUNT)

This drawing reveals the copyrighted intellectual property of Columbia Cascade Company. Not for use by others without our express, written authorization.

Authorization for use is hereby granted to architects, landscape architects and similar design professionals solely for the purpose of specifying TimberForm products.



COLUMBIA CASCADE COMPANY

Makers of TimberForm®, PipeLine®,
RePlay®, TimberForm®-2, InterPlay®,
CycLoops® and CycLocker® Products.

1300 S.W. Sixth Avenue, Suite 310 Telephone 503/223-1157
Portland, Oregon 97201-3464 Facsimile 503/223-4530
U.S.A.

WWW.TIMBERFORM.COM

Title:
**TIMBERFORM BOULEVARD
MODEL NO. 2931-20
CHAIR**



Scale
3/4" = 1'-0"

Drawn by: AT 07-04-10
Ck'd by:

Drawing No.
W-2931-20

Sheet
1 of 1