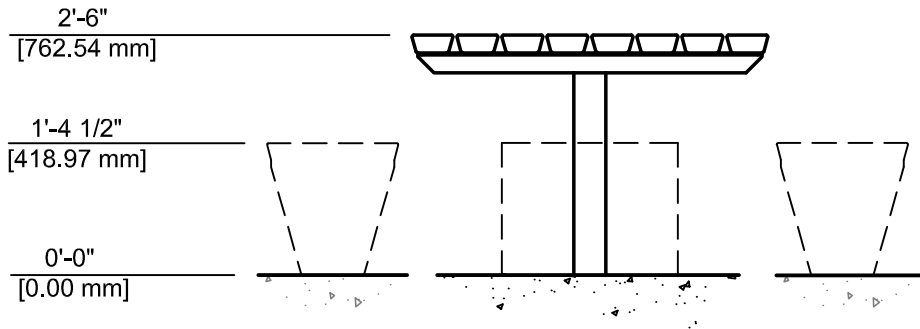


TOP VIEW  
SCALE: 1/2"=1'-0"



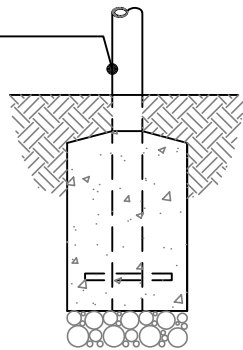
FRONT VIEW  
SCALE: 1/2"=1'-0"

DIRECT EMBEDMENT TABLE/  
SEAT FRAME ASSEMBLY

0'-0"  
FINISHED GRADE

NOTE:  
CONCRETE FOOTING AND NO. 4  
REBAR (BY OTHERS) PER LOCAL  
SOIL CONDITIONS. CONSULT  
PROJECT ENGINEER FOR EXACT  
REQUIREMENTS.

-(1'-6")  
-(457 mm)

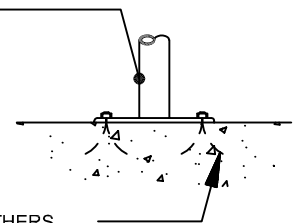


2054-E (DIRECT EMBEDMENT)  
SCALE: 3/4"=1'-0"

PEDESTAL MOUNT TABLE/  
SEAT FRAME ASSEMBLY

0'-0"  
FINISHED GRADE

5/8" (16 mm) DIAMETER HOLES  
PROVIDED FOR ANCHORS BY OTHERS.



2054-P (PEDESTAL MOUNT)  
SCALE: 3/4"=1'-0"

Date	Revision	By
△		
△		
△		
△	01-28-20	TITLEBLOCK JK/SK
Scale	Drawn by: JK	01-23-19
NOTED	CK'd by: SK	01-24-19

**COLUMBIA CASCADE COMPANY**  
Makers of TimberForm®, PipeLine®, RePlay®,  
TimberForm®-2 and CycLoops® Products.

1300 S.W. Sixth Avenue, Suite 310  
Portland, Oregon 97201-3464  
U.S.A.

Telephone 503/223-1157  
Facsimile 503/223-4530

This drawing reveals the copyrighted intellectual property of Columbia Cascade Company. Not for use by others without our express, written authorization.

Title:  
**TIMBERFORM DILLER  
MODEL NO. 2990-4545  
TABLE**

Drawing No.  
**W-2990-4545**

Sheet  
**1 of 1**