

TOP VIEW

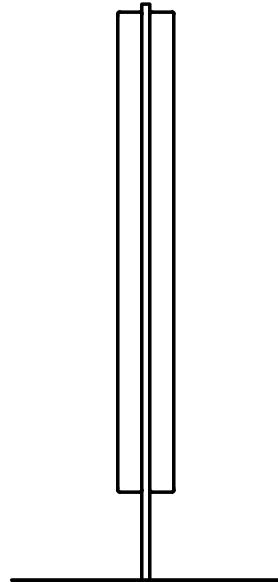
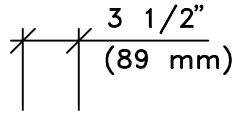
3'-0"
(914 mm)

BOLLARD

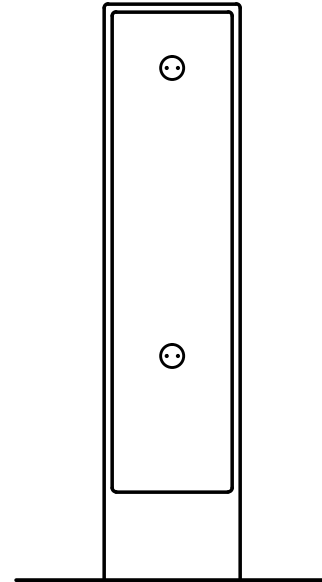
0'-0"

FINISHED GRADE

FRONT VIEW



SIDE VIEW

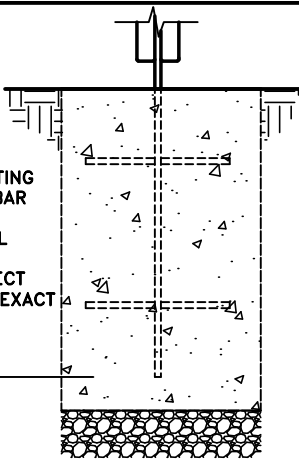


BACK VIEW

0'-0"
FINISHED GRADE

NOTE:
CONCRETE FOOTING
AND NO. 4 REBAR
(BY OTHERS)
PER LOCAL SOIL
CONDITIONS.
CONSULT PROJECT
ENGINEER FOR EXACT
REQUIREMENTS.

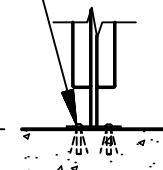
-(2'-0")
-(610 mm)



2179-01-E (EMBEDMENT)

5/8" DIA. HOLES
PROVIDED IN BASE
FOR ANCHORS BY OTHERS
(TYPICAL - 4).

0'-0"
FINISHED GRADE



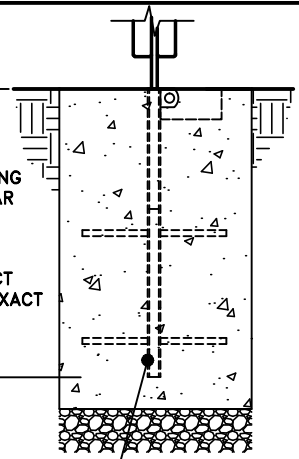
2179-01-P (PEDESTAL MOUNT)

0'-0"
FINISHED GRADE

NOTE:
CONCRETE FOOTING
AND NO. 4 REBAR
(BY OTHERS)
PER LOCAL SOIL
CONDITIONS.
CONSULT PROJECT
ENGINEER FOR EXACT
REQUIREMENTS.

-(2'-0")
-(610 mm)

BOLLARD
FOOTING SLEEVE



2179-01-R (REMOVABLE)

This drawing reveals the copyrighted intellectual property of Columbia Cascade Company. Not for use by others without our express, written authorization.

Authorization for use is hereby granted to architects, landscape architects and similar design professionals solely for the purpose of specifying TimberForm products.



COLUMBIA CASCADE COMPANY

Makers of TimberForm®, PipeLine®, RePlay®, TimberForm®-2, InterPlay®, CycLoops® and CycLocker® Products.

1300 S.W. Sixth Avenue, Suite 310 Telephone 503/223-1157
Portland, Oregon 97201-3464 Facsimile 503/223-4530
U.S.A.

WWW.TIMBERFORM.COM

Title:
TIMBERFORM
MODEL NO. 2179-01
CONTEMPORARY BOLLARD



Scale
1" = 1'-0"

Drawn by: AT 11-11-13
Ck'd by: CL 11-11-13

Drawing No.
W-2179-01

Sheet
1 of 1